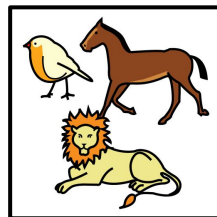


MIKÄ ELÄIN?

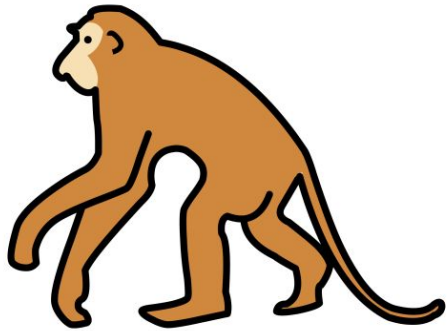


MIKÄ

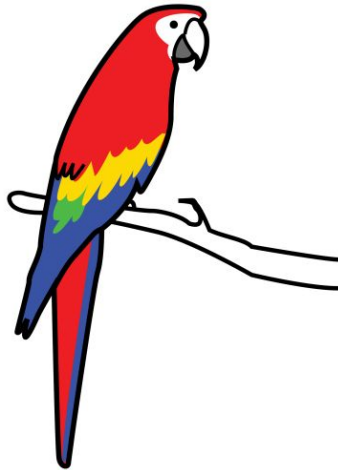


ELÄIN?

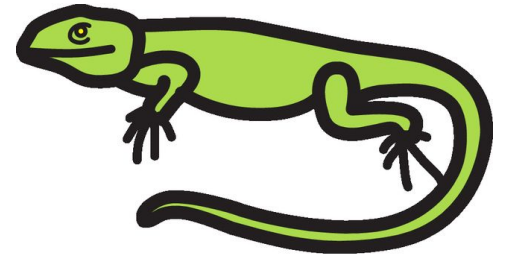
Mikä eläin osaa roikkua puussa?



A-PI-NA

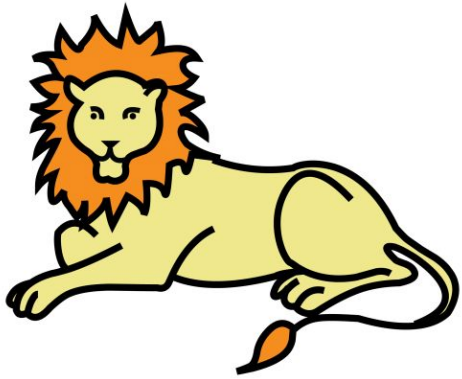


PA-PU-KAI-JA

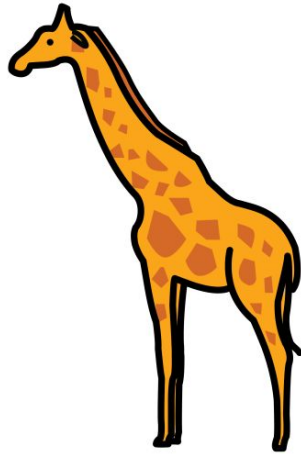


LIS-KO

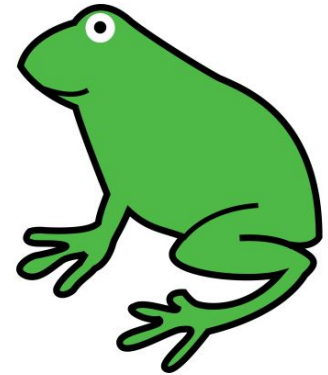
Mikä eläin murisee?



LEI-JO-NA

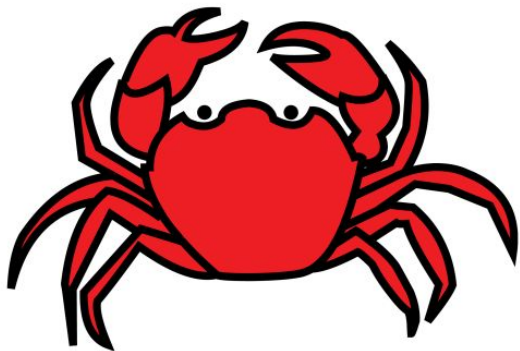


KI-RAH-VI

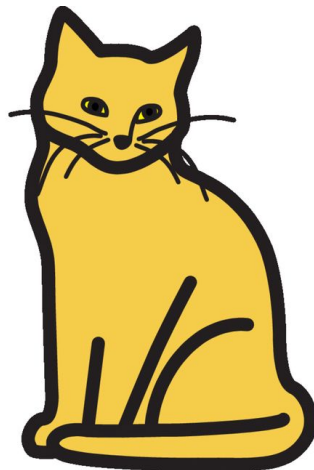


SAM-MAK-KO

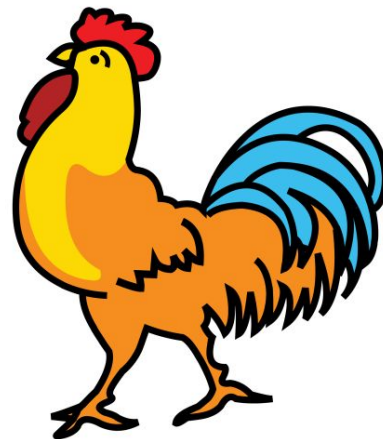
Mikä eläin kiekuu aamulla?



RA-PU

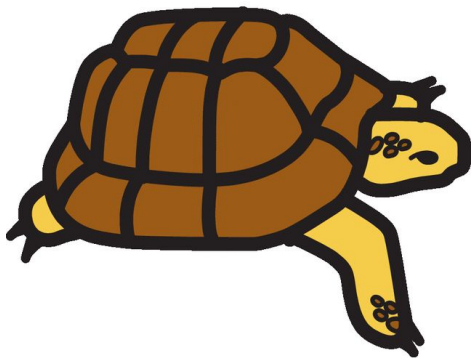


KIS-SA

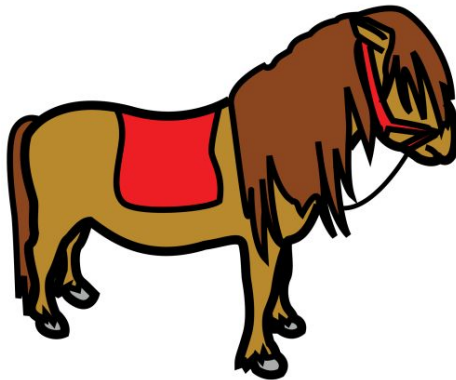


KUK-KO

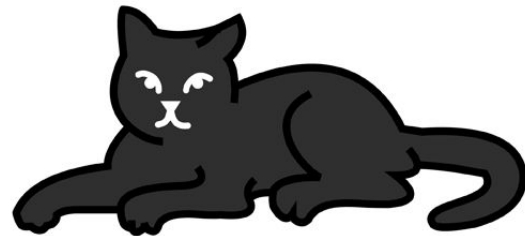
Mikä eläin on hitain ?



KIL-PI-KON-NA

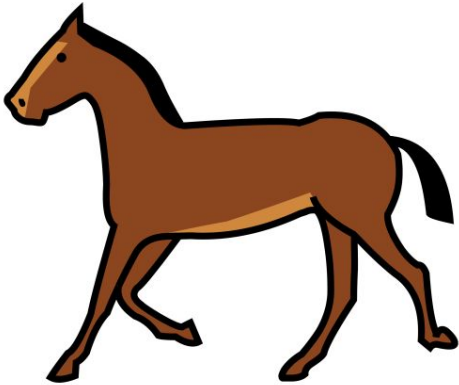


PO-NI

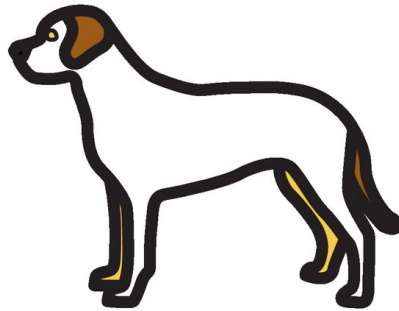


KIS-SA

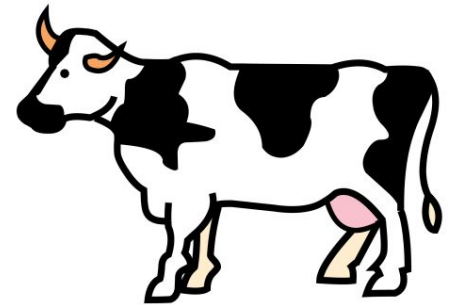
Mikä eläin asuu navetassa?



HE-VO-NEN

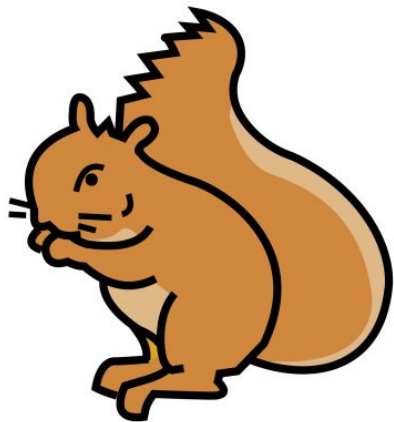


KOI-RA

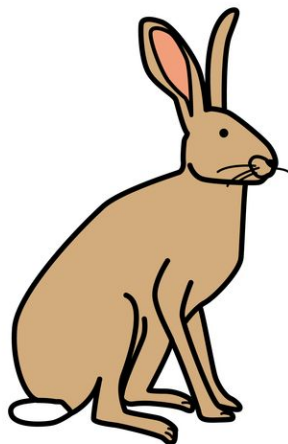


LEH-MÄ

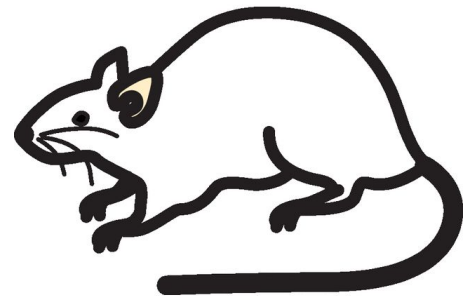
Mikä eläin asuu puussa ?



O-RA-VA

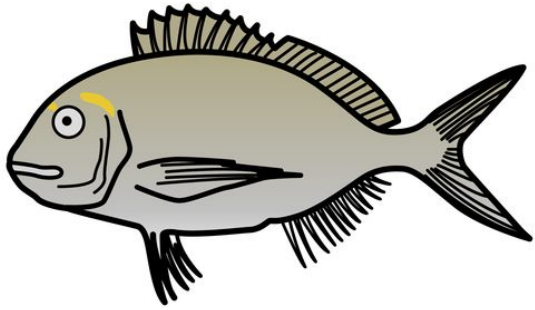


JÄ-NIS

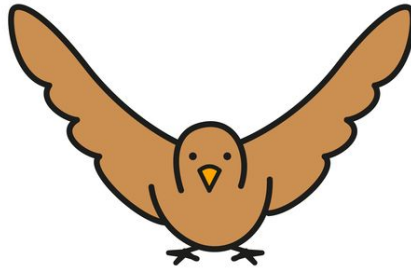


HII-RI

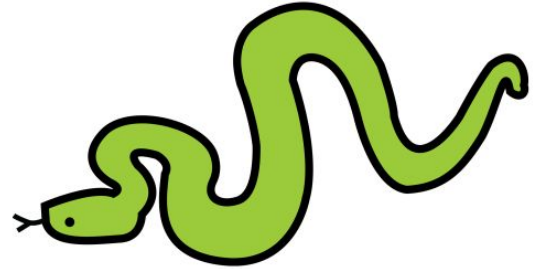
Millä eläin osaa lentää?



KA-LA

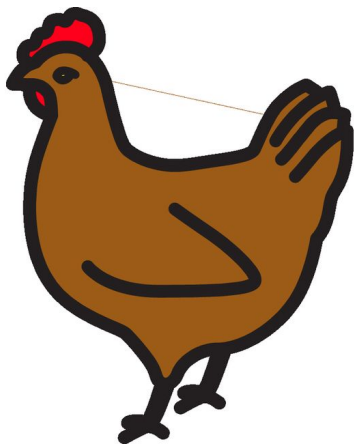


LIN-TU

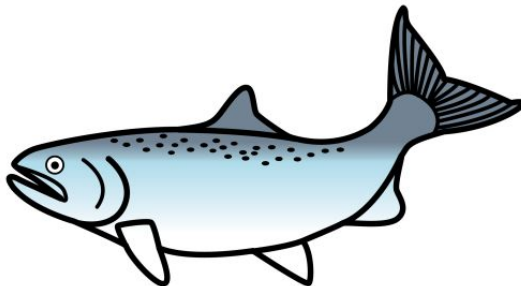


KÄÄR-ME

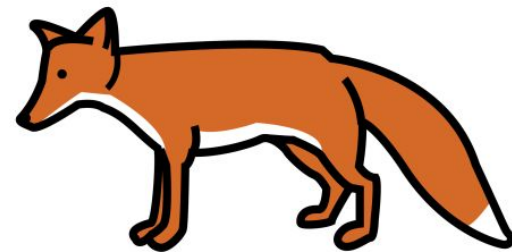
Millä eläin asuu vedessä?



KA-NA

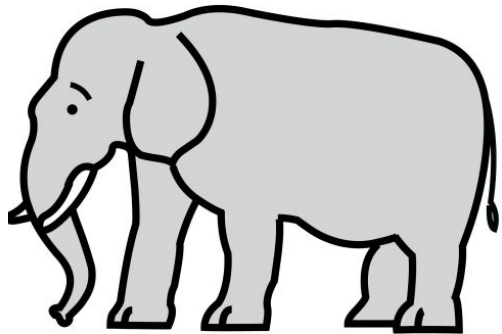


KA-LA

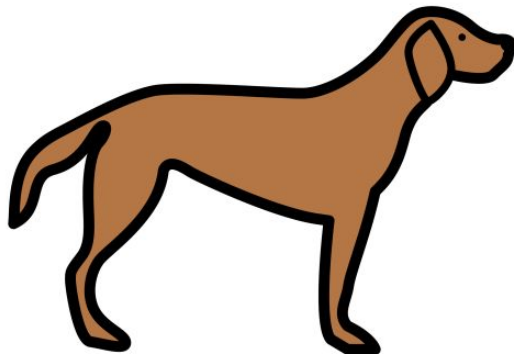


KET-TU

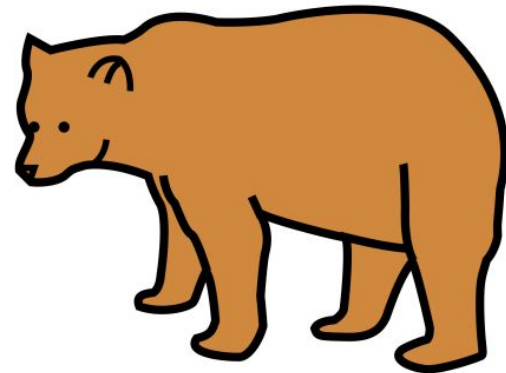
Millä eläin on isoin?



NOR-SU



KOI-RA



KAR-HU